

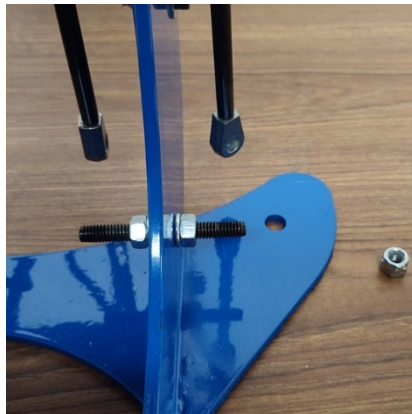
CLAMSHELL HARDWARE BUSHING & CASTLE NUT UPDATE

This hardware kit solves **Pressure Loss & Loosening Nuts** issues due to frame hardware wearing out & loosening.



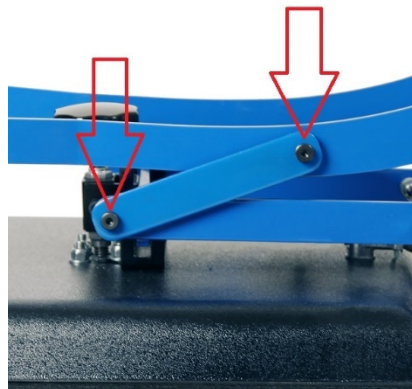
1. Disconnect all Gas Lifter Springs from the bottom bolts only.

LIFT HANDLE UP slightly to and slide bottoms of shocks off.



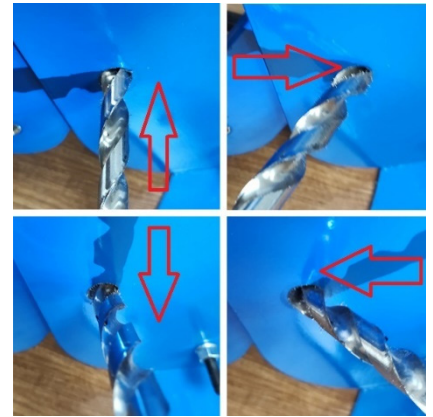
2. Remove RIGHT SIDE LINK ONLY. Leave the left side link assembled.

DRILL or PUNCH out the existing bushings in the Side Links & Handle Arms.



3. NOTE: If bushings are worn, **KNOCK / PUNCH** them out forcefully with a 1/2" bit & hammer.

If tight, **DRILL** them out with a 1/2" bit & cordless drill.



(HINT: If drilling, drill at all angles as shown above, just a little, to remove brass-bushing's blue edges. Then straight inward. Bushings will pop out sooner & easier.)

4. Push new long-sized 1/4" bushings (not short 3/16" bushings) into side links and arms.



5. Place 3 Brass washers as shown on each bolt. One under bolt head, two on smooth part of bolt.

IMPORTANT: One Bolt with **LONGER-THREADS** must go to the Upper handle position.



6. Fit side link back onto handle and pressure arm.

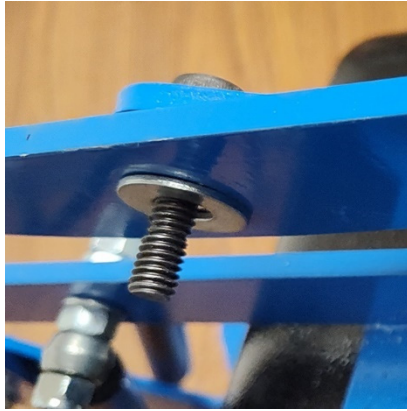
The bolt with Longer threads in the upper position.

(HINT: Lift handle up slightly to align holes.)



7. Place Silver Washer on inside surface.

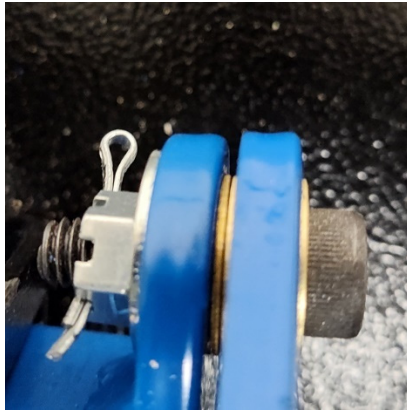
Screw Castle Nut on to tighten all layers together.



8. **CONFIRM LAYERS:**

From outside-to-inside:

Allen Bolt head
1 Brass washer
Blue Link w/ bushing
2 Brass washers
Blue Arm w/ bushing
Silver Washer
Castle Nut

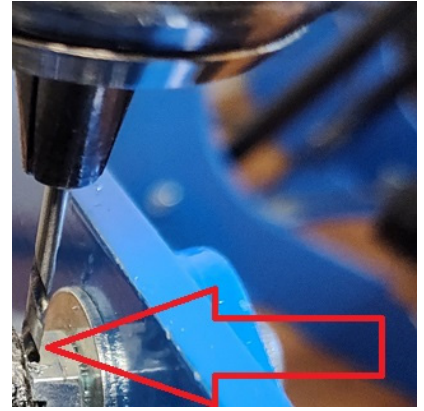


9. Tighten CASTLE NUT *TIGHTLY* onto bolt threads. Then, *LOOSEN* nut slightly to align closest through-hole for cotter pin.



SPLIT & WRAP cotter pin tightly around nut as shown.

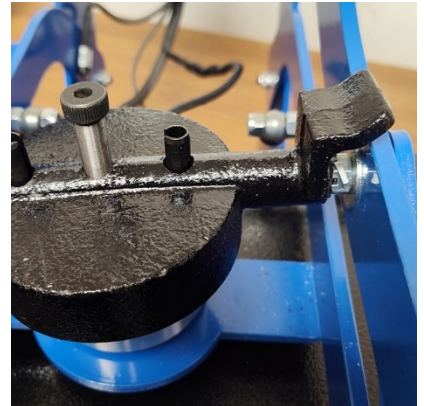
10. (HINT: If the cotter pin is difficult to slide through, use a very tiny 1/16" drill bit only to quickly Ream / Pass / Clear through the hole and nut. That makes the pin easy and smooth to install.)



11. If the model is **MANUAL** (2 gas shocks only) and NOT Auto pop-up, REPEAT Steps 2 to 10 for the LEFT Side Link, then Skip to Step 17.

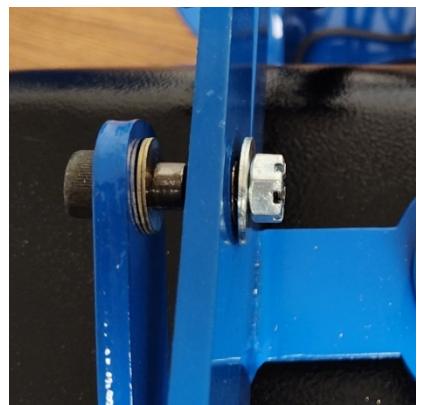
If the model is **AUTO-POPUP** (4 gas shocks), REPEAT Steps 2 to 6 for the LEFT Side Link, then Skip to Step 12.

12. Push the Black Magnet Bracket into the UPPER RIGHT Side bolt's longer threads.



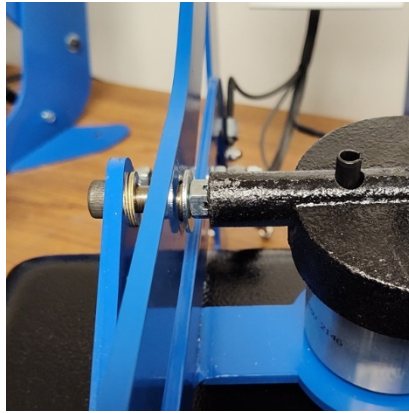
13. Screw the UPPER LEFT castle nut on only a few threads as shown.

The bolt threads should not go past the Castle Nut.



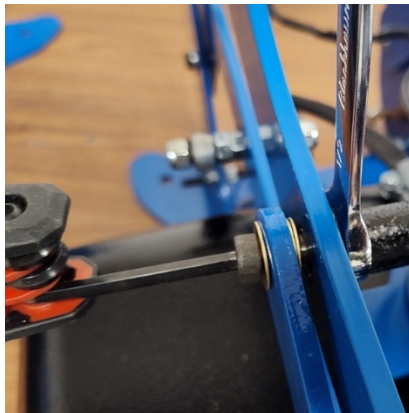
14. Push Black Magnet Bracket into position against Upper Left nut.

The handle arms may need to be spread & pushed apart a little to Pry/Wedge the bracket in place.



15. Tighten the castle nut and bolt tightly. The long-threaded bolt will go INTO the Black Magnet Bracket

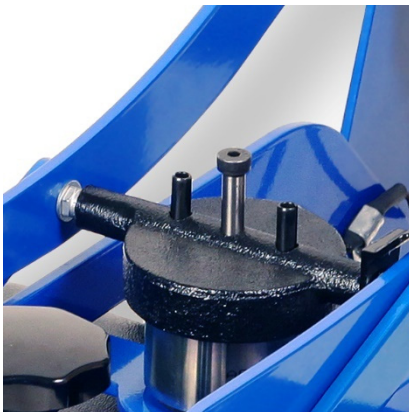
Make sure the brass washers are ON the silver shoulder of the bolt.



16. Confirm Step 8 order of layers.

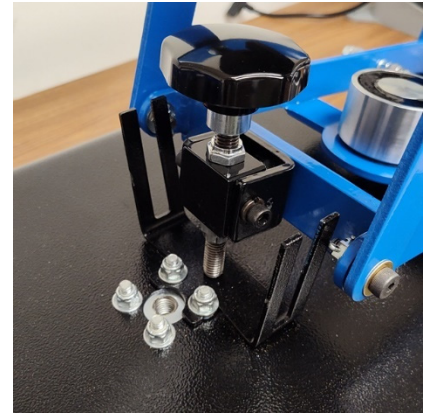
Install cotter pins as shown in steps 8 to 10.

Black Magnet Bracket should swivel between long-threaded bolts.



17. Disconnect the heater from the frame.

TURN the Black Pressure Knob LEFT (Counter-Clockwise) until the heater drops onto the rubber pad and is separate from the blue frame.



18. Remove both sides of upper arm hardware.

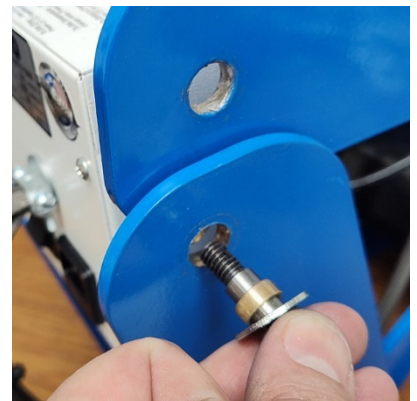
Lift & position both handle arms as shown.

Knock-out / Drill-out old bushings.



19. The SHORTER bronze bushings are used in the frame sides. The LONGER bronze bushings are used in the handle arms.

A SILVER WASHER is used on the outside bolt head (not brass).



20. Two brass washers are between the blue layers.

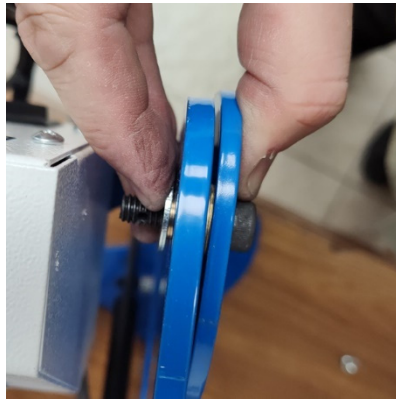
Make sure the brass washers are ON the smooth silver part of the bolt.



21. CONFIRM LAYERS:

From outside-to-inside:

Allen Bolt head
1 Silver washer
Blue Side & Short Bshg
2 Brass washers
Blue Arm & Long Bshg
Silver Washer
Castle Nut



22. Install Castle Nut and Cotter Pin.
Repeat steps 19 to 21 for the remaining top side.

23. Move bottom pressure arms back.

Knock-out / Drill-out old bushings.

(HINT: Lift the handle to push pressure arms back and forth as needed for next steps.)



24. Move both pressure arms back in place and put one bolt in only one side loosely (no bushings/washers) – just to hold one pressure arm in place.



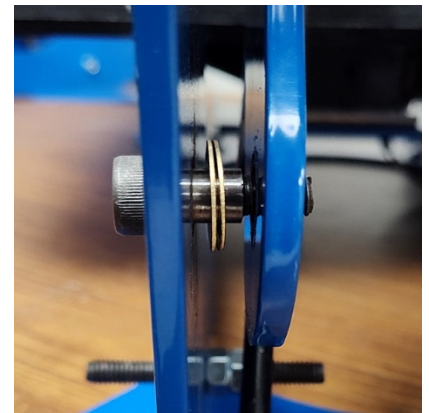
25. On the other side, use something to wedge the arm open about 1/2" to make space for installing the bolt / bushings / washers easier.



26. Follow steps 19 - 21 (& step 25) for Both Bottom Bolts.

CONFIRM LAYERS

carefully on Step 21 for Both Bottom Bolts, and install Nut & Cotter Pin.



27. Screw pressure knob back into heater.
(HINT: Lift the front of heater slightly up, so the pressure knob bolt screws Perfectly Straight down into the heater.)

TEST WITH HEAVY CLAMPING PRESSURE THOROUGHLY.

Retighten & reset any castle nuts with new cotter pins on bolts that tilt, don't stay straight, or are too loose.